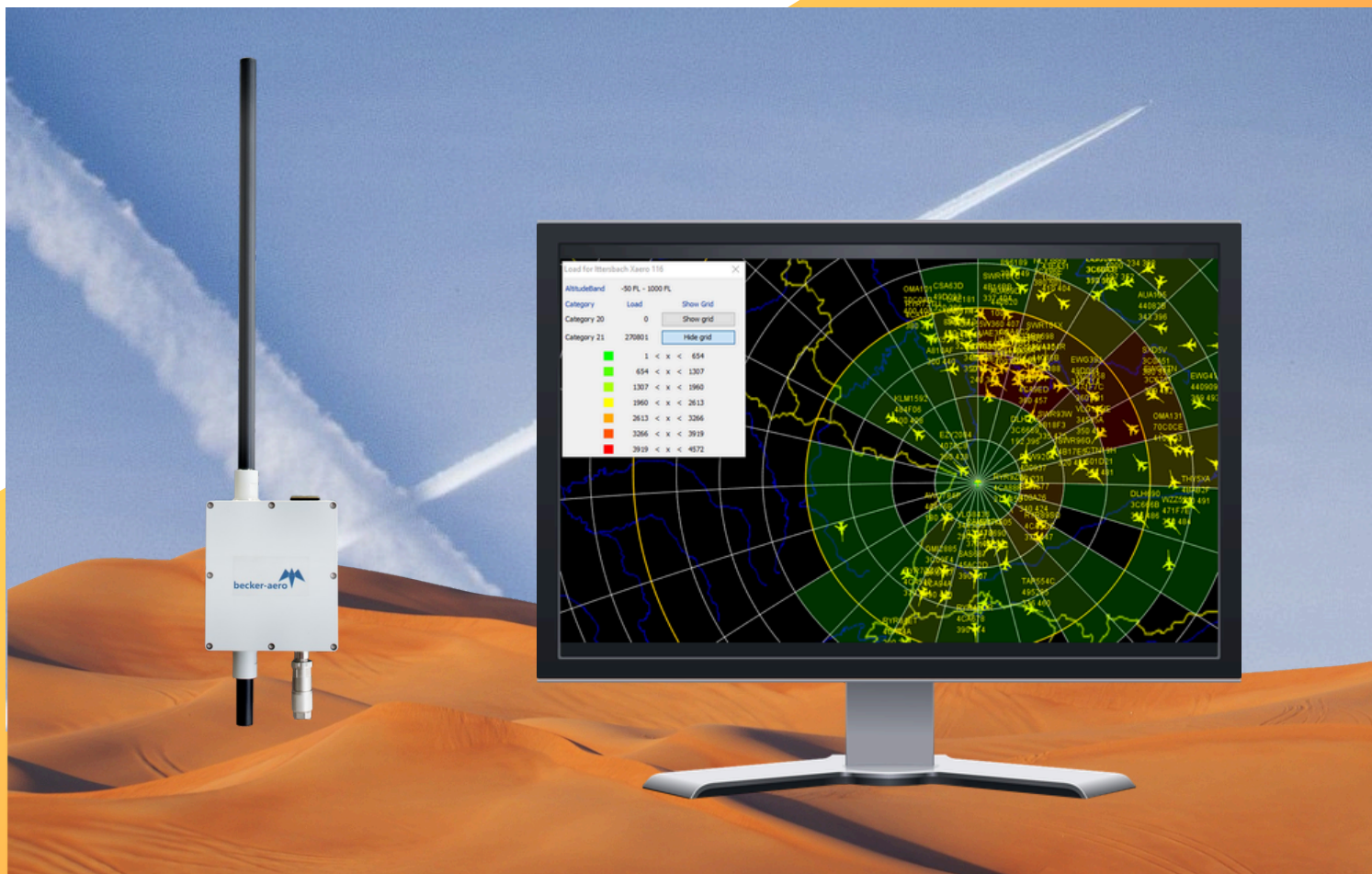





XTD Technical Display



XTD is a display system which supports navigation experts to assess the quality of any ADS-B sensors and to evaluate the ASTERIX messages generated by such sensors. By depicting the targets on a geographical map, XTD allows examination of coverage of individual ADS-B sensors in real-time.

XTD provides detailed information about:

-  the targets
-  the ADS-B sensors
-  statistics about the coverage, rate, load and the message amplitude

Message amplitude for Ittersbach Xaero 116

AltitudeBand -50 FL - 100 FL

Load for Ittersbach Xaero 116

Category 2

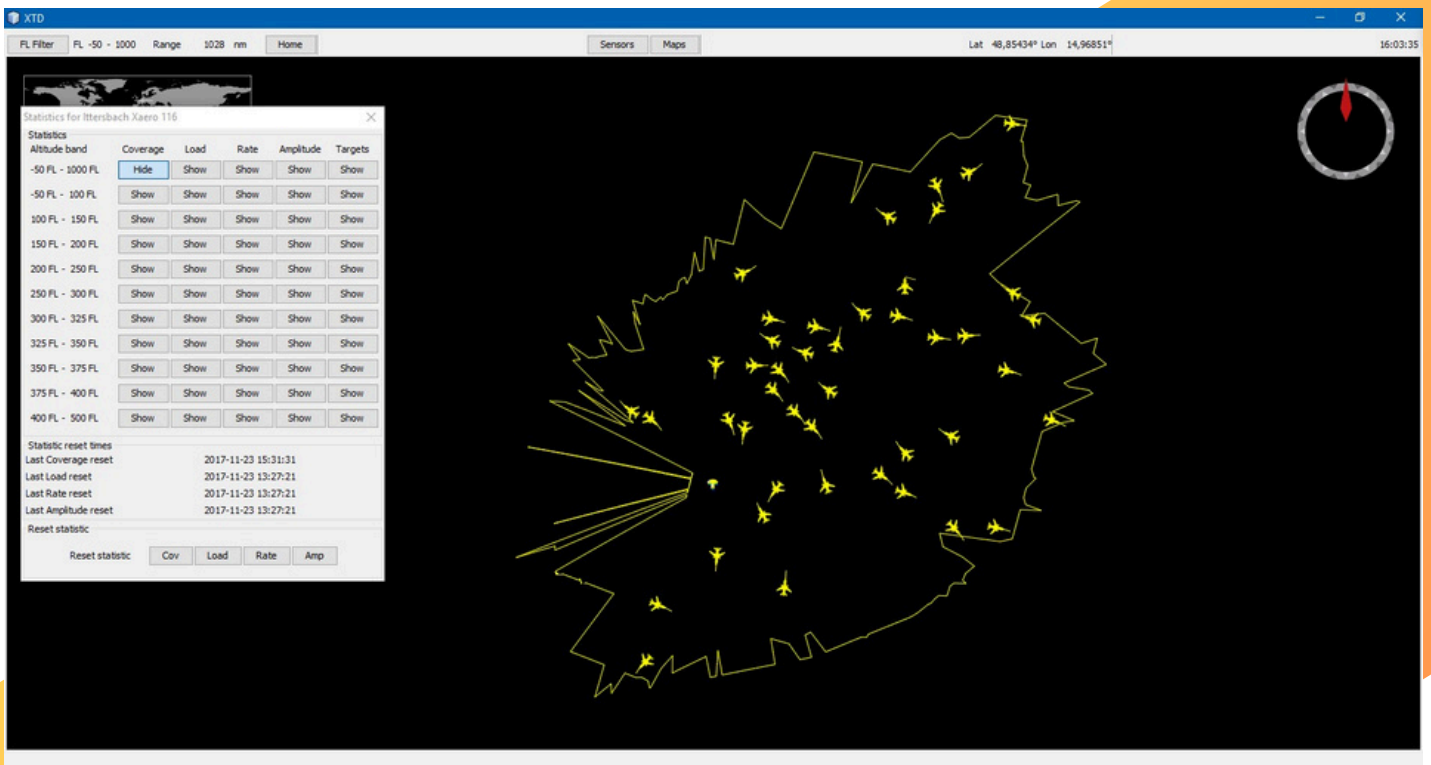
AltitudeBand -50 FL - 1000 FL

Rate for Ittersbach Xaero 116

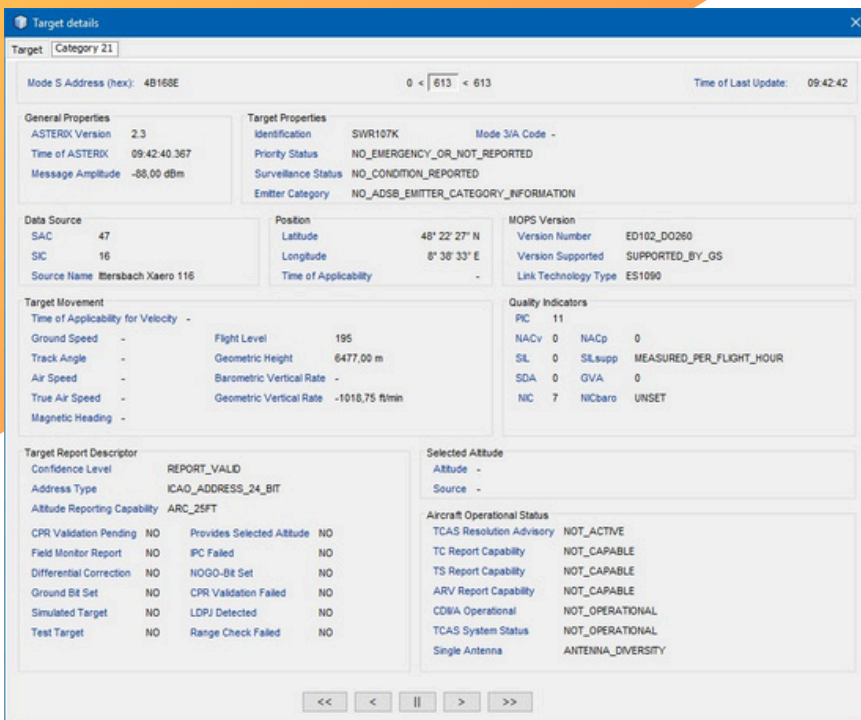
AltitudeBand	Rate	Show Grid
Category 20	0,00	Show grid
Category 21	126,88	Show grid

Sensors

Ittersbach Xaero 111	Ittersbach Xaero 115	Ittersbach Xaero 116
V RR S	V RR S	V RR S
L	L	L



The coverage window illustrates the reception range of the selected sensor. A borderline is shown around the area within which messages have been received since the last reset for the selected altitude band.



✈ The information received for a selected target is presented in the Target Details window. All the data displayed here are received from a specified sensor in ASTERIX messages.

✈ The Target Details window shows the message details and the total number of received ASTERIX messages of a specific sensor.